

Intrinsic and Extrinsic Stability of Ovonic-Switching Devices

F. Buscemi,¹ E. Piccinini, R. Brunetti,¹ M. Rudan

“E. De Castro” Advanced Research Center on Electronic Systems (ARCES) and Department DEI
University of Bologna, Viale Risorgimento 2, I-40136 Bologna, Italy — mrudan@arces.unibo.it

¹Department of Physics, Informatics, and Mathematics

University of Modena and Reggio Emilia, Via Campi 213/A, I-41125, Modena, Italy

Abstract

The time evolution of current and voltage in Ovonic-switching devices is affected, on one side, by parasitic elements due to contacts and connectors and, on the other one, by the internal-relaxation mechanisms of the material itself. The two aspects, respectively termed here “extrinsic” and “intrinsic” dynamics, are investigated in this paper on the basis of the time-dependent, trap-limited conduction model proposed by the authors for investigating this type of devices.

Introduction

The electric switching observed in a class of materials, referred to as “Ovonic”, is due to a transition process from a high- to a low-resistivity state occurring when a threshold field is reached [1]–[15]. The investigations on these materials’ models have strongly been stimulated by the technological exploitation in the design of phase-change memories [12]. Such applications require not only predictive tools for the threshold switching in steady-state conditions, but also the analysis of the electric behavior of Ovonic materials in the dynamic and transient regimes. The $I(V)$ characteristic of Ovonic materials of interest shows a negative differential-resistance region above a threshold point, which may give rise to instability. Besides degrading the quality of the $I(V)$ -curve measurement (due to instability, in fact, only the positive-slope branches may actually be traced), instability may hamper the functioning of the selectors, made of Ovonic materials, used in advanced memory architectures [16]. There are at least two causes of instability: *i*) the unavoidable presence of reactive parasitic elements due to contacts and connectors and, *ii*) the internal-relaxation mechanisms of the material itself. The first type of parasitic elements may be approximated with lumped linear capacitors or inductors [17], [18] like, e.g., in Fig. 1; thus, their incorporation into the device model is achieved without changing the standard description based on voltages, currents, and their derivatives. In contrast, the internal-relaxation mechanisms are not necessarily amenable to a description based on the standard variables, this making the analysis more involved. This paper addresses the issue of a global model of an Ovonic device based on the lumped-element structure, investigates the origin of a possible oscillatory behavior due to instabilities, and identifies the corresponding relaxation times. The work is based on the analytical model of Ovonic

switching presented in [19], relying on a thermally-assisted, trap-limited conduction scheme, which has been shown able to reproduce electric bistability and has more recently been extended to transient analyses [20].

Model

The starting point is the time-dependent model of [20]:

$$J = q \mu n_B F, \quad \frac{n}{n_B} = 1 + c \exp\left(\frac{\Delta E}{k T_e}\right), \quad (1)$$

$$J F = n k \frac{T_e - T_0}{\tau_R} + \Delta E \frac{d}{dt} [n_B(T_e) - n_B(T_0)], \quad (2)$$

where J , q , μ , and F are the current density, electronic charge, mobility of the band electrons, and electric field, respectively. As the sample under investigation is assumed one dimensional and uniform, the equations bear no dependence on position. In turn, n , n_B are the concentrations of all electrons and of band electrons, respectively, while k , T_e , T_0 , and τ_R are the Boltzmann constant, the temperature of the band electrons, the room temperature, and the electron-temperature relaxation time. Finally, ΔE is the difference between the energy of the band and that of the traps, and c is the ratio between the density of states of the traps and that of the band. The first of (1) is the transport equation describing the drift motion of the band electrons under the influence of the field, while (2) expresses the power balance of the band electrons: specifically, the JF product at the left hand side provides the power per unit volume injected by the field: such a power is absorbed in part by the phonons (first term at the right hand side), while the other part determines the time change of the band population (second term). Finally, the second of (1) relates n_B/n , that is, the fraction of the electrons that belong to the band, to the electrons’ temperature.

The three model equations (1,2) involve four unknowns, namely, J , F , n_B , and T_e . The equations may be reduced to a single differential relation involving F and J only. However, the use of the F, J variables is awkward, and it is found that the adoption of auxiliary variables is more suitable because it provides expressions that are easily managed analytically without introducing approximations. This is true also for the time-dependent analysis. To proceed along this line one defines the normalization parameters, symbols, and auxiliary unknowns listed in Table I.

TABLE I
PARAMETERS, SYMBOLS, AND AUXILIARY UNKNOWNNS.

Name or definition	Symbol	Value	Units
Room temperature	T_0	300	K
Boltzmann constant	k	1.38×10^{-23}	J/K
Total electron conc.	n	1×10^{20}	cm^{-3}
Energy gap	ΔE	360	meV
$\Delta E/(k T_0)$	a	13.93	—
Density-of-states ratio	c	2.5×10^{-4}	—
$1 + c \exp(a)$	v^{eq}	281.4	—
$1 + c$	v_m	1.00025	—
Device length	L	40	nm
Device cross-section	A	40×40	nm^2
Electric field	F	—	V m^{-1}
Voltage, LF	V	—	V
Current density	J	—	A m^{-2}
Current, AJ	I	—	A
—	L/A	2.5×10^{-2}	nm^{-1}
$q \mu n F_0$	J_0	4.137	MA/cm^2
$k T_0/(q \mu \tau_R)$	F_0^2	1.002×10^{10}	V^2/cm^2
—	F_0/J_0	2.42×10^{-2}	$\Omega \text{ cm}$
$L F_0/(A J_0)$	R_0	6049	Ω
$A J_0$	I_0	66.24	μA
$R_0 I_0$	—	397.4	mV
$q \mu n F/J$	v	—	—
$a/\log[(v-1)/c]$	$H+1$	—	—
R/R_0	k_R	—	—
$V_C/(R_0 I_0)$	k_C	—	—
Relaxation time	τ_R	1	ps
$t/(a \tau_R)$	β	—	—
$1/(a \tau_R)$	—	71.79	GHz

Dynamics of the Intrinsic Ovonic Switch

Here the auxiliary variable v is most suited. In fact, (1,2) become

$$dv/d\beta = v^2 [H(v) - (I/I_0)^2 v] = M(I, v). \quad (3)$$

When a purely-resistive circuit (like that obtained by removing the capacitance from the circuit of Fig. 1) is added to the bare Ovonic device, the load curve in the I, v variables is obtained from $V = V_C - RI$ and $v = V/(R_0 I)$, with $R = R_L + R_S$ and $R_0 = L F_0/(A J_0)$, and reads $I/I_0 = k_C/(v + k_R)$ (the parameters are defined in Table I). The bias point I_q, v_q is found by coupling the latter with the steady-state case of (3), to find

$$H(v) = \frac{k_C^2 v}{(v + k_R)^2}, \quad v > 1. \quad (4)$$

The stability around the bias point is examined by letting $I = I_q + \delta I$, to which it corresponds $v = v_q + \delta v$. This yields

$$\frac{d}{d\beta} \delta v = \frac{\delta v}{\beta_0}, \quad \frac{1}{\beta_0} = \left(\frac{\partial M}{\partial I} \right)_q \left(\frac{\partial I}{\partial v} \right)_q + \left(\frac{\partial M}{\partial v} \right)_q, \quad (5)$$

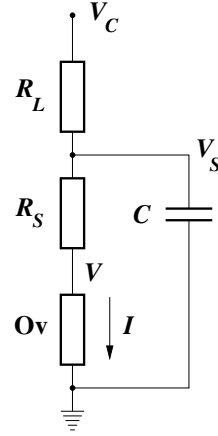


Fig. 1. Circuit obtained by adding the parasitic elements R_S and C to the Ovonic device, with $C = C_S + C_L$ the parallel of the device's parasitic capacitance and the input capacitance of the measuring apparatus. The other component R_L is the input resistance of the apparatus.

whose solution is $\delta v = \delta v(\beta = 0) \exp(\beta/\beta_0)$. The bias point is stable (unstable) if $1/\beta_0 < 0$ ($1/\beta_0 > 0$). The constant $1/\beta_0$ may have either sign depending on the bias point; its value is found by fixing V_C and R , then solving (4) to determine the bias point I_q, v_q . One notes that the right hand side of (4) is non negative because $v > 1$ and $k_C \geq 0$. As a consequence, the solution(s) are possible only in the range of v where $H \geq 0$. Such a range is $v_m < v \leq v_{\text{eq}}$ (the values are given in Table I), with H monotonically decreasing with v , and $\lim_{v \rightarrow v_m^+} H(v) = +\infty$, $H(v_{\text{eq}}) = 0$.

The solution of (4) is conveniently dealt with by fixing k_R and letting v vary over the range specified above, to find

$$k_C = (v + k_R) \sqrt{H(v)/v}. \quad (6)$$

Each triad k_R, k_C, v fulfilling (6) is a solution of (4); then, one uses the triad to determine the corresponding value of $1/\beta_0$. If (6) is non monotonic with respect to v (for a fixed k_R), then (4) has more than one solution, because two or more values of v correspond to the same pair k_C, k_R . The procedure is then repeated after changing k_R , to obtain a family of curves like (6); the outcome is shown in Fig. 2. From the figure one finds that $\beta_0 < 0$ for the whole range of bias points of practical interest. It follows that if any constant current I is prescribed such that $M \neq 0$ in (3), the auxiliary variable v (proportional to V in this case) exponentially relaxes to yield $M \rightarrow 0$.

Extrinsic Dynamics

The extrinsic dynamics is dealt with by solving the full circuit of Fig. 1 after letting $d/dt = 0$ in (2). The values of R and V_C are such that there is only one intersection between the Ovonic and load characteristics (Fig. 3, where it is $|dF/dJ|_{\text{load}} < |dF/dJ|_{\text{Ov}}$). As shown below, the

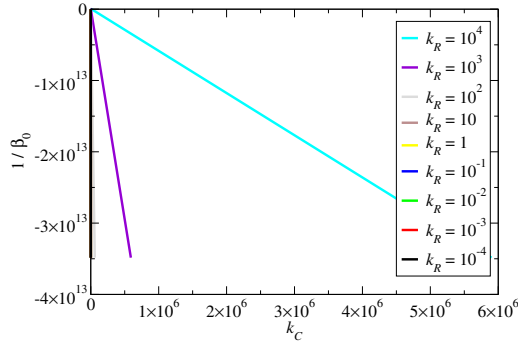


Fig. 2. Calculation of parameter $1/\beta_0$ obtained from the second of (5) for different combinations of $k_R = R/R_0$ and $k_C = V_C/(R_0 I_0)$.

parameters' values can be chosen in such a way as to make the intersection unstable. Letting $\gamma = t/(R_L C)$ yields

$$\frac{V_C - (R_S + R_L)I - V(I)}{R_S + dV/dI} = \frac{dI}{d\gamma}. \quad (7)$$

The above equation is separable when $V_C = \text{const}$. Letting q still denote the bias point, in the vicinity of it one may replace dV/dI with $(dV/dI)_q = r < 0$ and, respectively, $V(I)$ with $V_q + r(I - I_q)$, so that (7) becomes

$$\frac{V_C - V_q + r I_q}{R_S + r} = \frac{dI}{d\gamma} + \frac{R_L + R_S + r}{R_S + r} I. \quad (8)$$

Stability is dictated by the coefficient of I : the bias point is stable when $|r| < R_S$ or $|r| > R_L + R_S$, while it is unstable when $R_S < |r| < R_L + R_S$. Far from the intersection, and considering the $V_C = \text{const}$ case, the transient analysis must be carried out by solving (7) without approximations. When the parameters are chosen in such a way that $R_S < |r| < R_L + R_S$ holds, an oscillation cycle takes place, like $A \rightarrow B \rightarrow C \rightarrow D \rightarrow A$ of Fig. 3. The $B \rightarrow C$ and $C \rightarrow D$ portions of the cycle are instantaneous due to the neglect of the time derivative in (2). The cycle's period is $t_{cy} = t_B - t_A + t_D - t_C$.

The result is shown in Figs. 4 and 5, where the normalized current density J/J_0 and, respectively, the normalized electric field F/F_0 are drawn as functions of the normalized time $(t - t_A)/(R_L C)$. Using the data listed in Table I, one finds $(t_B - t_A)/(R_L C) \simeq 0.7525$ and $(t_D - t_A)/(R_L C) \simeq 0.8909$. Letting, e.g., $R_L \simeq 54.4 \text{ k}\Omega$, $C = 1 \text{ nF}$, the period turns out to be $t_D - t_A \simeq 48.5 \text{ }\mu\text{s}$.

Intrinsic and Extrinsic Dynamics

To examine the behavior of a circuit like that of Fig. 1, when the intrinsic dynamic behavior of the Ovonic device is included in the analysis, one must couple (3), recast in terms of the I, V variables, with the circuit's equation. To this purpose, it is not correct to assume (like in (7)) that $V = V(I)$, because such a relation implies that the static model of the Ovonic device is used. Instead, one

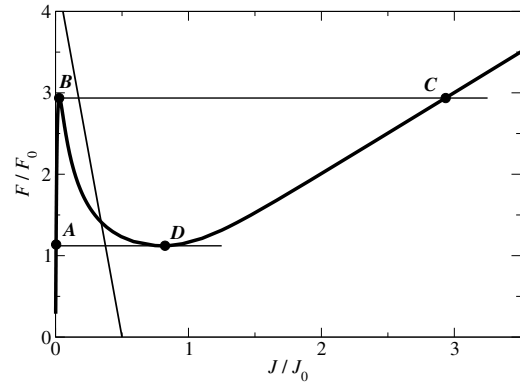


Fig. 3. Extrinsic dynamics. Normalized field F/F_0 as a function of the normalized current density J/J_0 . A load curve is shown, such that there is only one intersection with the Ovonic curve, in the negative-slope branch. The points mark the oscillation cycle $A \rightarrow B \rightarrow C \rightarrow D \rightarrow A$, which occurs when the load curve has only one intersection with the Ovonic curve, and the equilibrium point is unstable (see text).

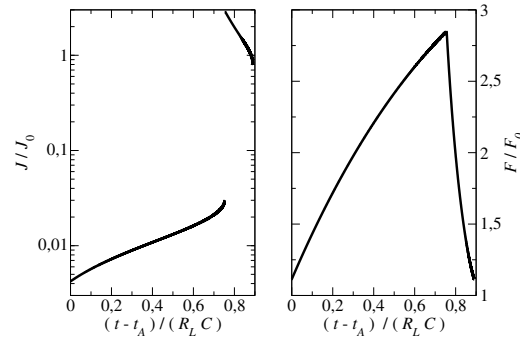


Fig. 4. Extrinsic dynamics. Normalized current density J/J_0 , in a logarithmic scale, as a function of the normalized time $(t - t_A)/(R_L C)$. The horizontal axis ranges over one period of the cycle.

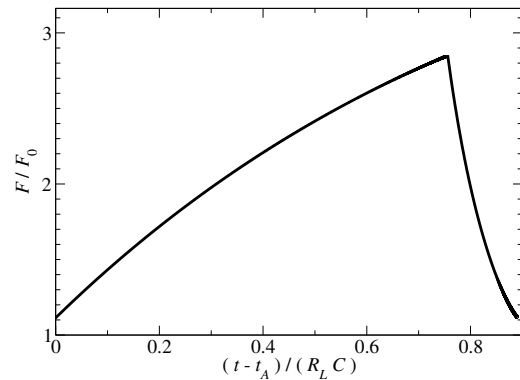


Fig. 5. Extrinsic dynamics. Normalized electric field F/F_0 as a function of the normalized time $(t - t_A)/(R_L C)$. The horizontal axis ranges over one period of the cycle.

must consider V and I as independent variables, so that the intrinsic Ovonic dynamics reads

$$\frac{\dot{V}}{V} - \frac{\dot{I}}{I} = \frac{Y(V, I)}{I}, \quad (9)$$

$$Y(V, I) = \frac{V/R_0}{a\tau_R} \left[H\left(\frac{V}{R_0 I}\right) - \frac{V I}{L F_0 A J_0} \right]. \quad (10)$$

In this case it is not necessary to resort to an auxiliary variable, because both I and V are the unknowns of a system of equations. In turn, the circuit's equations read

$$\frac{V_C - V_S}{R_L} = C \frac{dV_S}{dt} + I, \quad V_S = R_S I + V, \quad (11)$$

equivalent to

$$\dot{V} + R_S \dot{I} = W(V, I), \quad (12)$$

$$W(V, I) = [V_C - V - (R_L + R_S)I]/(R_L C). \quad (13)$$

Solving (9), (12) for \dot{V} and \dot{I} yields

$$\dot{V} = V \frac{W + R_S Y}{V + R_S I}, \quad \dot{I} = \frac{I W - V Y}{V + R_S I}, \quad (14)$$

namely, a system of two coupled, non-linear equations of the first order. Such equations provide the global model of the Ovonic device, incorporating the internal relaxation time and the parasitic elements, anticipated in the Introduction. The phase trajectory is obtained from (9), (12) and reads

$$\frac{dV}{dI} = V \frac{W + R_S Y}{I W - V Y}. \quad (15)$$

The solution of (14), (15) must be tackled by numerical methods. However, a qualitative analysis is feasible when the time constants of the intrinsic and extrinsic dynamics are very different (which is indeed possible if one considers the values reported in Fig. 2). Specifically, with reference to the case where the extrinsic dynamics is unstable, and assuming that $-1/\beta_0 \gg R_L C$, it is found that the limiting cycle illustrated above becomes an asymptotic condition, to which the Ovonic device is attracted through a much faster exponential relaxation.

Conclusions

The ‘‘intrinsic’’ and ‘‘extrinsic’’ dynamics of Ovonic switches have been investigated in this paper on the basis of the time-dependent, trap-limited conduction model proposed by the authors. Both dynamics lead to separable, first order equations. The combination of the two can still be reduced to a relatively compact system of equations, giving rise to an asymptotic cycle when, as typical of realistic cases, the time constants are very different.

References

- [1] S. R. Ovshinsky, ‘‘Reversible electrical switching phenomena in disordered structures,’’ *Phys. Rev. Lett.*, vol. 21, p. 1450, 1968.
- [2] D. Adler, ‘‘Switching phenomena in thin films,’’ *J. Vac. Sci. Technol.*, vol. 10, p. 728, 1973.
- [3] D. Adler, M. S. Shur, M. Silver, and S. R. Ovshinsky, ‘‘Threshold switching in chalcogenide-glass thin films,’’ *J. Appl. Phys.*, vol. 51, p. 3289, 1980.
- [4] M. Nardone, V. G. Karpov, D. C. S. Jackson, and I. V. Karpov, ‘‘A unified model of nucleation switching,’’ *Appl. Phys. Lett.*, vol. 94, p. 103509, 2009.
- [5] M. Simon, M. Nardone, V. G. Karpov, and I. V. Karpov, ‘‘Conductive path formation in glasses of phase change memory,’’ *J. Appl. Phys.*, vol. 108, p. 064514, 2010.
- [6] A. Pirovano, A. Lacaíta, A. Benvenuti, F. Pellizzer, and R. Bez, ‘‘Electronic switching in phase-change memories,’’ *IEEE Trans. Electron Devices*, vol. 51, p. 452, 2004.
- [7] D. Ielmini and Y. Zhang, ‘‘Analytical model for subthreshold conduction and threshold switching in chalcogenide-based memory devices,’’ *J. Appl. Phys.*, no. 102, p. 054517, 2007.
- [8] D. Ielmini, ‘‘Threshold switching mechanism by high-field energy gain in the hopping transport of chalcogenide glasses,’’ *Phys. Rev. B*, vol. 78, p. 035308, 2008.
- [9] M. Rudan, F. Giovanardi, E. Piccinini, F. Buscemi, R. Brunetti, and C. Jacoboni, ‘‘Voltage snapback in amorphous-GST memory devices: Transport model and validation,’’ *IEEE Trans. Electron Devices*, vol. 58, p. 4361, 2011.
- [10] E. Piccinini, A. Cappelli, F. Buscemi, R. Brunetti, D. Ielmini, M. Rudan, and C. Jacoboni, ‘‘Hot-carrier trap-limited transport in switching chalcogenides,’’ *J. Appl. Phys.*, vol. 112, p. 083722, 2012.
- [11] A. Cappelli, E. Piccinini, F. Xiong, A. Behnam, R. Brunetti, M. Rudan, E. Pop, and C. Jacoboni, ‘‘Conductive preferential paths of hot carriers in amorphous phase-change materials,’’ *Appl. Phys. Lett.*, vol. 103, p. 083503, 2013.
- [12] S. Raoux and M. Wuttig, *Phase Change Materials: Science and Applications*. Springer, 2010.
- [13] S. Lavizzari, D. Ielmini, D. Sharma, and A. Lacaíta, ‘‘Transient effects of delay, switching and recovery in phase change memory (PCM) devices,’’ in *Proc. International Electron Devices Meeting (IEDM)*. San Francisco: IEEE, 2008, pp. 1–4.
- [14] S. Lavizzari, D. Sharma, and D. Ielmini, ‘‘Threshold-switching delay controlled by $1/f$ current fluctuations in phase-change memory devices,’’ *IEEE Trans. Electron Devices*, vol. 57, p. 1047, 2010.
- [15] S. Lavizzari, D. Ielmini, and A. Lacaíta, ‘‘Transient simulation of delay and switching effects in phase-change memories,’’ *IEEE Trans. Electron Devices*, vol. 57, p. 3257, 2010.
- [16] G. W. Burr, R. S. Shenoy, K. Virwani, P. Narayanan, A. Padilla, and B. Kurdi, ‘‘Access devices for 3D crosspoint memory,’’ *Semicond. Sci. Technol. B*, vol. 32, pp. 040802–1, 2014.
- [17] P. E. Schmidt and R. Callarotti, ‘‘Theoretical and experimental study of the operation of ovonic switches in the relaxation oscillation mode. i. the charging characteristic during the off state,’’ *J. Appl. Phys.*, vol. 55, p. 3144, 1984.
- [18] R. Callarotti and E. Schmidt, ‘‘Theoretical and experimental study of the operation of ovonic switches in the relaxation oscillation mode. ii. the discharging characteristic of the equivalent circuit,’’ *J. Appl. Phys.*, vol. 55, p. 3148, 1984.
- [19] F. Buscemi, E. Piccinini, A. Cappelli, R. Brunetti, M. Rudan, and C. Jacoboni, ‘‘Electrical bistability in amorphous semiconductors: a basic analytical theory,’’ *Appl. Phys. Lett.*, vol. 104, p. 022101, 2014.
- [20] F. Buscemi, E. Piccinini, R. Brunetti, M. Rudan, and C. Jacoboni, ‘‘Time-dependent transport in amorphous semiconductors: Instability in the field-controlled regime,’’ *Appl. Phys. Lett.*, vol. 104, p. 262106, 2014.